

Sandy Health Centre



COVID-19 Regulations

Opening Hours

Monday

08:00-12:30

13:30-18:30

Tuesday

08:00-12:30

13:30-18:30

Wednesday

08:00-12:30

13:30-18:30

Thursday

08:00-12:30

13:30-18:30

Friday

08:00-12:30

13:30-18:30

Saturday

Closed

Sunday

Closed

Between 18:00-18:30
you can only make
urgent calls to the
practice

COVID-19 restrictions are still in place. We require all patients to wear a face mask/covering when attending the surgery.

You can find information about our 'COVID-19 Privacy Notice' on our website under 'Practice Information'.



Repeat Prescriptions - How to Order Online

We prefer patients to order medication online due to infection control safety and quick processing of medication.

If you do not have access to the internet - you can continue to put your repeat slips into the prescription request box.

You can order your repeat prescriptions online easily through our interactive website: www.sandyhealthcentre.nhs.uk

Click on 'Prescriptions and Medicines Centre' then 'Request Medication Online'

Alternatively, you can register for the online services. Please register through our website by clicking on 'Reception and Enquiries' then 'Register for online services'

Please allow five working days for your request to be processed. If you are a dispensing patient you will be texted



Website

www.sandyhealthcentre.nhs.uk

Telephone

01767 682525

Address

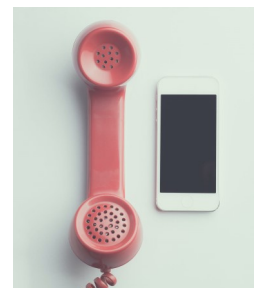
Sandy Health Centre
Northcroft
Sandy
Bedfordshire
SG19 1JQ

Telephone Lines - New System

We were made aware of some issues with the system which have now been resolved. We are continuing to monitor the system in order to ensure that the changes made stay in place.

If you experience any further problems please contact the practice through our website:

www.sandyhealthcentre.nhs.uk

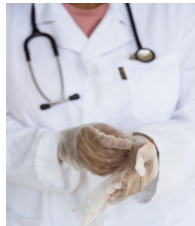


NHS Health Checks

We have started doing NHS Health Checks again for people aged 40-74 years old.

This is a wellbeing check to assess your risk of developing heart disease, stroke, kidney disease, diabetes or any relevant warning signs. The check will include questions and measurements such as age, family history, height, weight, blood pressure. There will also be an appointment made for a routine blood test to check your cholesterol level.

If you are eligible for a free NHS Health Check, you will receive an invitation from the practice to arrange an appointment.



Patient Participation Group

The next PPG meeting will be held virtually in June 2021. We will be attending the meetings between lunch time - evening.

We welcome feedback and ideas from our members in order to help improve our services.

If you would like to join our virtual group, please complete a registration form which can be found under 'Practice Information' on our website.

Blood Tests at Bedford Hospital

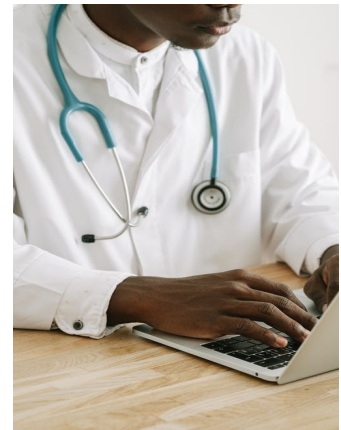
When attending for your blood test at Gilbert Hitchcock House; please ensure you have your blood form with you and do not just turn up.

New Staff

We have new members of staff who have recently joined:

- Dr A Young, GP - Wednesday & Thursday
- Dr G Singh, GP - Tuesday & Friday
- Lisa Wall, Practice Nurse
- Sheilah Rogers, Healthcare Assistant
- Tracey Latham - Office Manager
- Meena Bhatti - Reception Manager

Under 'Practice Information' on our website you can view all members of staff and their job roles.



BEDOC Extended Access Service

We are still offering pre-bookable appointments through BEDOC Extended Access Service.

This is an out-of-hours service running on days and times that the practice does not normally operate such as weekends, bank holidays and weekdays after 18:30pm.

The clinician you are booked in with will in the first instance, call you at an approximate time and arrange to see you face-to-face if necessary.

Appointments are held at Sandy Health Centre, Ivel Medical Centre, Shefford Health Centre and more.



You can book appointments such as - asthma reviews; COPD reviews; CHD reviews; blood pressure checks; coil checks; pill checks; removal of sutures/staples; dressings; high vaginal swab; Doppler; NHS health checks; diabetic annual review; diabetic part 1; depot injections; B12 injections; Zoladex injections (you must bring your own injection); ECG (can be done at Ivel Medical Centre) and much more.